



**GREWE**  
BROKERAGE &  
DEVELOPMENT, LLC

# [ COMMERCE CENTER I ]

## Gravois Bluffs | Fenton, Missouri

### BUILDING B—28,532 SF



**Contact Information:**  
**Kyle Lenzen**  
 314-600-2351—klenzen@gjgrewe.com  
**Angelina Hristova**  
 314-800-4549—angelina@gjgrewe.com

### COMMERCE CENTER I

Fantastic opportunity for a call center, office or school coming available in the much sought after business park of Gravois Bluffs in Fenton, Missouri. It is an easy commute destination with access to both the south and west metro employee bases along with public transportation to the site from Metro Route 210. Surrounding amenities include restaurants, day cares, banks, gas, pharmacy, grocery, and medical.

- NNN charges estimated to be \$3.72 PSF
- Current tenants in the area include:



### Intersection of Highway 141 & Gravois Bluffs Blvd. Fenton, MO

#### [ DEMOGRAPHICS ]

1-Mile Radius | 3-Mile Radius | 5-Mile Radius

Med. Household Income	\$70,956	\$70,822	\$72,536
Total Population	40,915	120,428	275,404
Daytime Employment	43,796	85,604	149,104

#### [ AVERAGE DAILY TRAFFIC ]

Highway 141	54,011
Highway 30	36,918



**GOOD NEWS FOR PEOPLE ON THE GROW.**

G.J. Grewe Brokerage & Development LLC 9109 Watson Rd., 4th Floor, St. Louis, MO 63126

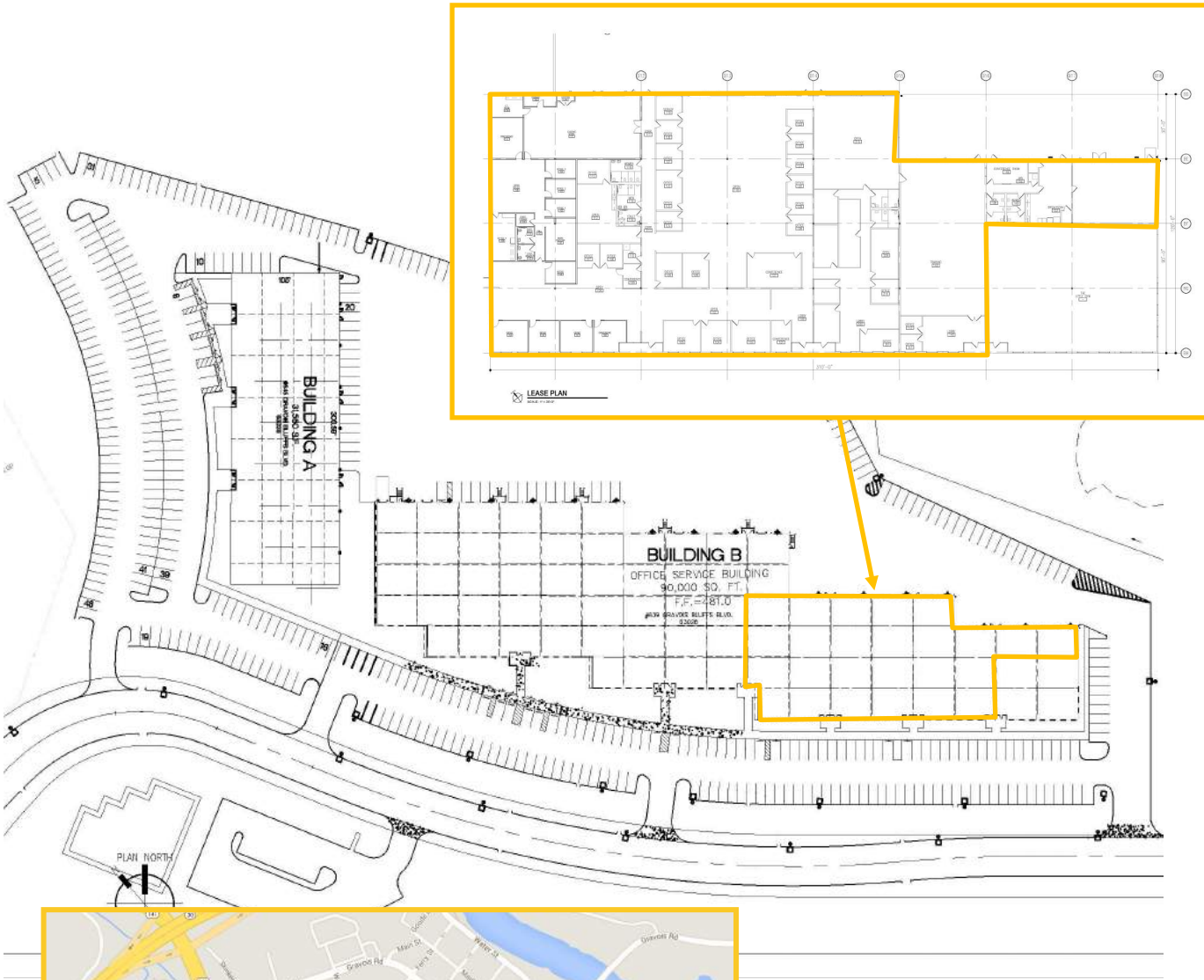
www.gjgrewe.com



# [COMMERCE CENTER I]

## Gravois Bluffs | Fenton, Missouri

### BUILDING B—28,532 SF



#### Contact Information:

Kyle Lenzen	Angelina Hristova
314-600-2351	314-800-4549
klenzen@gjgrewe.com	Angelina@gjgrewe.com

**GOOD NEWS FOR PEOPLE ON THE GROW.**

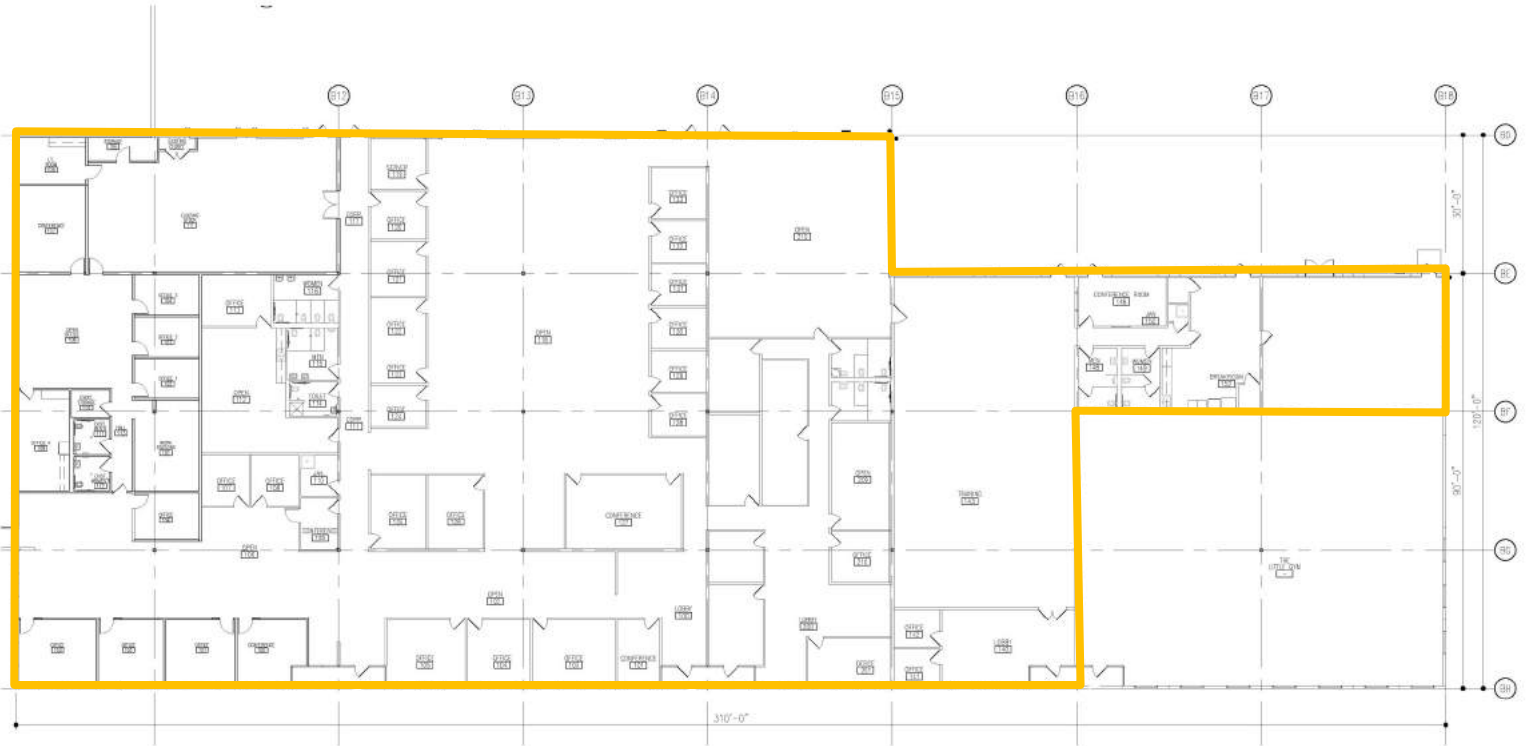
G.J. Grewe Brokerage & Development LLC 9109 Watson Rd., 4th Floor, St. Louis, MO 63126

[www.gjgrewe.com](http://www.gjgrewe.com)



# [COMMERCE CENTER I]

Gravois Bluffs | Fenton, Missouri  
BUILDING B—28,532 SF



**LEASE PLAN**  
SCALE: 1" = 20'-0"



### Contact Information:

Kyle Lenzen                      Angelina Hristova  
314-600-2351                      314-800-4549  
klenzen@gjgrewe.com          Angelina@gjgrewe.com

**GOOD NEWS FOR PEOPLE ON THE GROW.**

G.J. Grewe Brokerage & Development LLC 9109 Watson Rd., 4th Floor, St. Louis, MO 63126

[www.gjgrewe.com](http://www.gjgrewe.com)