



GREWE
BROKERAGE &
DEVELOPMENT, LLC

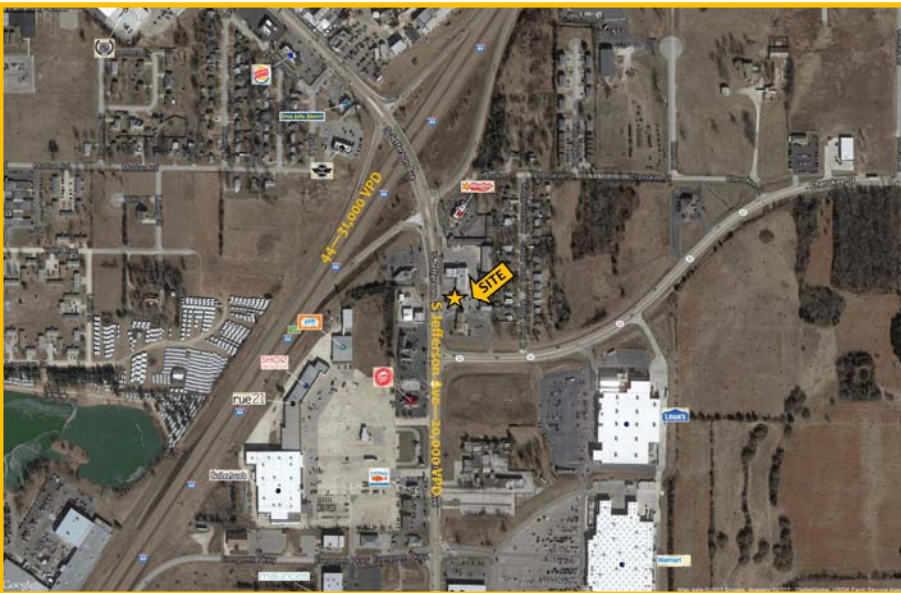
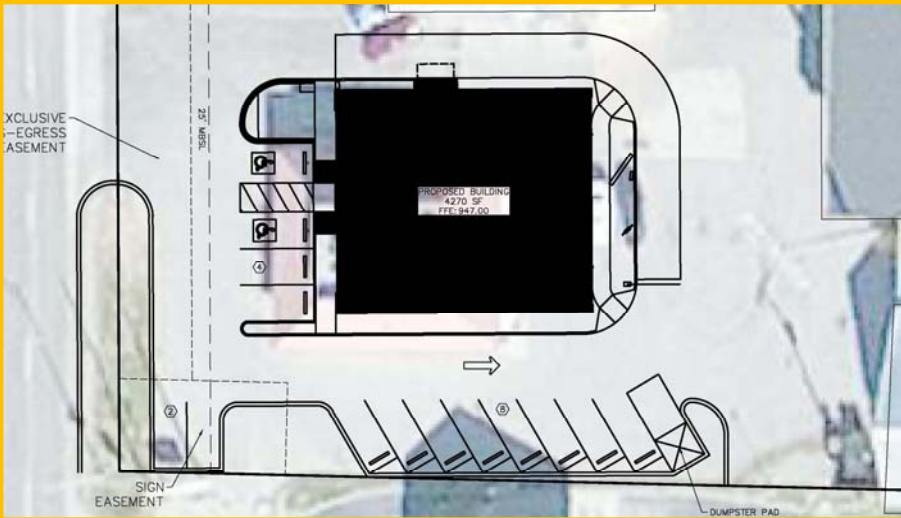
NEW DEVELOPMENT

1430 S JEFFERSON AVE LEBANON, MO 65536

Contact Information:
Kyle Lenzen
314.600.2351
klenzen@gjgrewe.com

1430 S Jefferson Avenue

New retail development lease opportunity located in the main retail corridor of Lebanon, Missouri. The developer is proposing a 4,270 square foot multi-tenant building with potential for a drive thru. The site offers easy access to Interstate 44 and the area is home to multiple nationally recognized Tenants.



S Jefferson Avenue & 44 Lebanon, MO

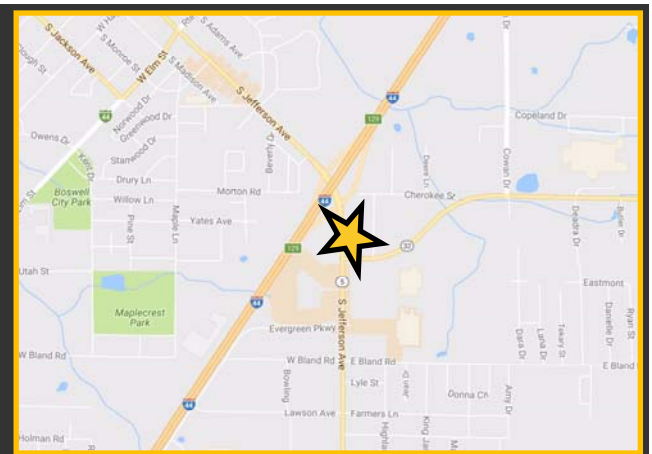
[DEMOGRAPHICS]

3-Mile Radius | 5-Mile Radius | 10-Mile Radius

Med. Household Income	\$35,398	\$39,339	\$41,686
Total Population	15,904	20,309	28,641
Daytime Employment	15,729	16,316	17,141

[AVERAGE DAILY TRAFFIC]

44	31,000
S Jefferson Avenue	20,000



GOOD NEWS FOR PEOPLE ON THE GROW.

G.J. Grewe Brokerage & Development LLC 9109 Watson Rd., 4th Floor, St. Louis, MO 63126

www.gjgrewe.com

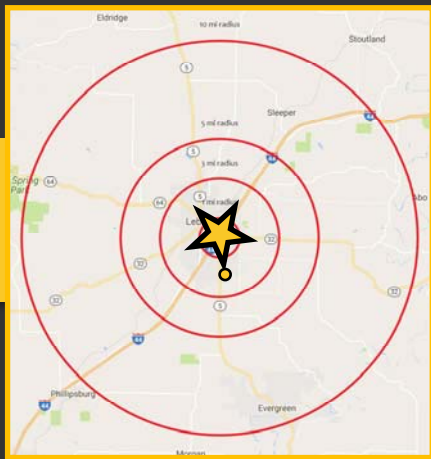
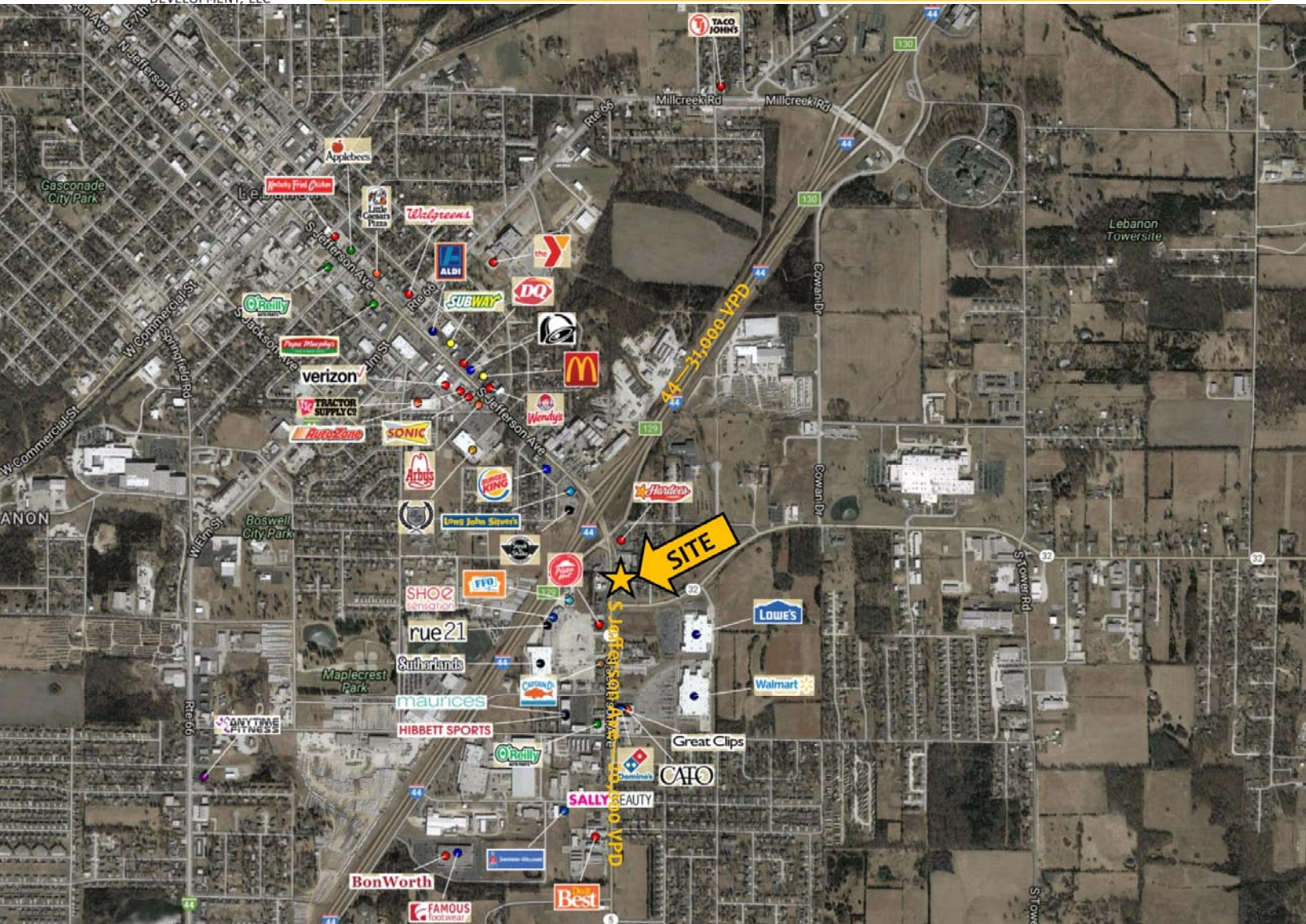


GREWE
BROKERAGE &
DEVELOPMENT, LLC

NEW DEVELOPMENT

1430 S JEFFERSON AVE

LEBANON, MO 65536



Contact Information:
Kyle Lenzen
314.600.2351
klenzen@gjgrewe.com

GOOD NEWS FOR PEOPLE ON THE GROW.

G.J. Grewe Brokerage & Development LLC 9109 Watson Rd., 4th Floor, St. Louis, MO 63126

www.gjgrewe.com