

BUTLER HILL

St. Louis, Missouri

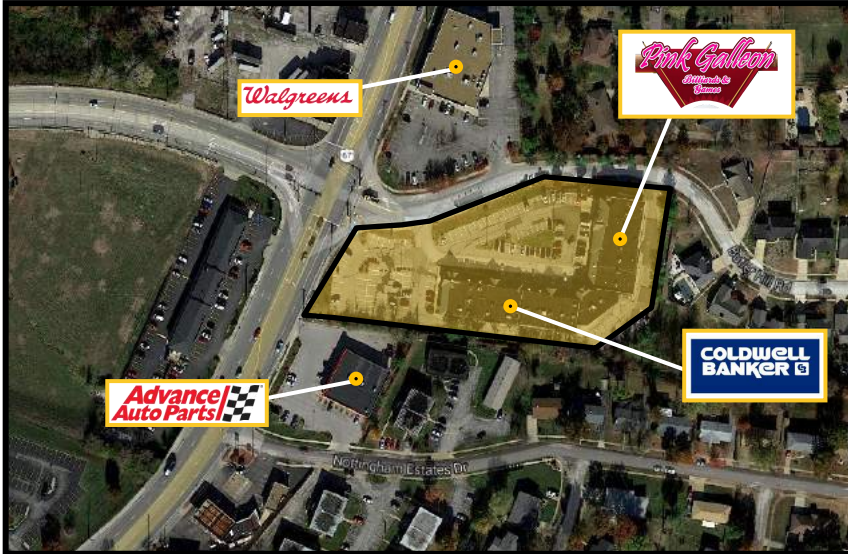


Contact Information:
Gary Grewe
 314.962.6300
 gary@gjgrewe.com

BUTLER HILL SQUARE

Butler Hill Square is located in an unincorporated area of South St. Louis County in the Lindbergh Boulevard Regional Commercial Corridor and only 12 miles from downtown St. Louis. The area is a mix of residential, retail and service oriented businesses, including 1,250 (1,2,3 bedroom) apartments with an occupancy rate of over 92% within a 1/2 mile radius. Butler Hill Square is in close proximity to Interstate 55, Interstate 270, Lindbergh Boulevard, Lemay Ferry Road and Tesson Ferry Road.

- Current tenants include:



Intersection of Butler Hill Rd. & Lemay Ferry Rd. St. Louis, MO

[DEMOGRAPHICS]

| | 1-Mile Radius | 3-Mile Radius | 5-Mile Radius |
|-----------------------|---------------|---------------|---------------|
| Med. Household Income | \$64,385 | \$65,550 | \$67,040 |
| Total Population | 10,365 | 76,783 | 166,808 |
| Daytime Employment | 2,623 | 31,332 | 62,839 |

[AVERAGE DAILY TRAFFIC]

| | |
|-----------------|------------|
| Butler Hill Rd. | 21,000 VPD |
| Lemay Ferry Rd. | 14,291 VPD |



GOOD NEWS FOR PEOPLE ON THE GROW.

G.J. Grewe Brokerage & Development LLC 9109 Watson Rd., 4th Floor, St. Louis, MO 63126

www.gjgrewe.com



GREWE
BROKERAGE &
DEVELOPMENT, LLC

BUTLER HILL

St. Louis, Missouri



RETAIL SPACE

- | | | |
|------|--------------------------------|------------|
| 1. | COLDWELL BANKER PREMIER | 4,275 S.F. |
| 2. | COLDWELL BANKER PREMIER | 1,240 S.F. |
| 3. | TRES SALON | 1,240 S.F. |
| 4. | LUCKY CHINA CHINESE RESTAURANT | 1,240 S.F. |
| 5. | AMBIANCE NAIL & HAIR DESIGN | 1,240 S.F. |
| 6. | TAILOR/SHOE REPAIR | 645 S.F. |
| 7. | AVAILABLE | 1,835 S.F. |
| 8. | FOUR HORSEMEN TATTOO | 1,240 S.F. |
| 9. | ST. LOUIS VAPOR SHOP | 1,240 S.F. |
| 10. | LABOR FINDERS | 2,894 S.F. |
| 11. | ADVANCE TRAINING & REHAB | 2,800 S.F. |
| 12. | PINK GALLEON | 7,000 S.F. |
| 13. | NAIL CLUB | 1,400 S.F. |
| 14A. | EXCEL SIGNS | 2,592 S.F. |
| 14B. | AVAILABLE | 1,441 S.F. |



Contact Information:
Gary Grewe
 314.962.6300
gary@gjgrewe.com

GOOD NEWS FOR PEOPLE ON THE GROW.

G.J. Grewe Brokerage & Development LLC 9109 Watson Rd., 4th Floor, St. Louis, MO 63126

www.gjgrewe.com