



[9109 WATSON]

St. Louis, Missouri

OFFICE SUITES



Contact Information:
Gary Grewe
 314.962.6300
 gary@gjgrewe.com

EXECUTIVE OFFICE SUITES

Looking for a professional office environment with access to cutting edge technology without the cost and frustration associated with opening your own business? G.J. Grewe Office Suites is pleased to offer furnished suites ranging from 107 SF to 270 SF. With convenient access to I-44 and I-270, our office suites are the perfect solution for small businesses. Amenities include: professional receptionist to greet clients and answer your phone, multi-line telephone with state of the art features and your own telephone number. We also offer Virtual Office Packages for home-based business owners who want a professional image.

- **Current tenants include:**



Located On Watson Rd. St. Louis, MO

[DEMOGRAPHICS]

	1-Mile Radius	3-Mile Radius	5-Mile Radius
Med. Household Income	\$67,887	\$68,555	\$65,231
Total Population	10,476	91,771	234,854
Daytime Employment	3,824	48,485	143,207

[AVERAGE DAILY TRAFFIC]

Watson Rd. 17,745 VPD



GOOD NEWS FOR PEOPLE ON THE GROW.

G.J. Grewe Brokerage & Development LLC 9109 Watson Rd., 4th Floor, St. Louis, MO 63126

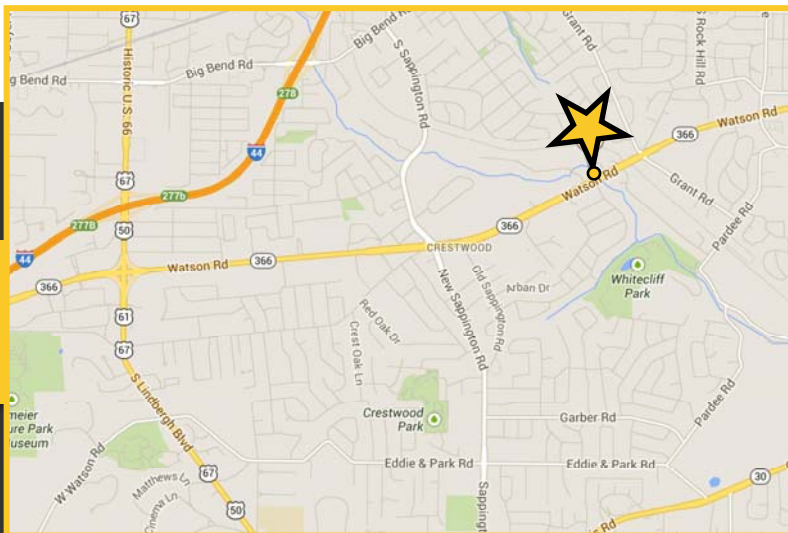
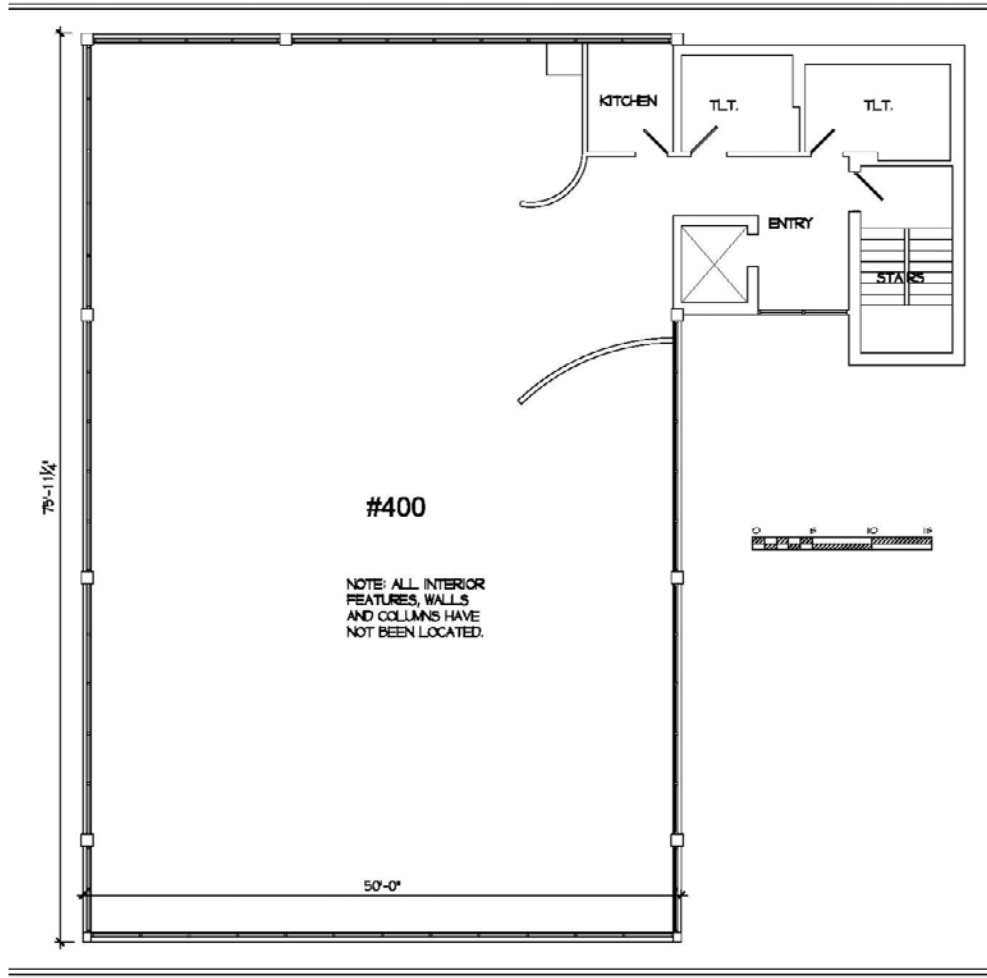
www.gjgrewe.com



[9109 WATSON]

St. Louis, Missouri

OFFICE SUITES



Contact Information:
Gary Grewe
314.962.6300
gary@gjgrewe.com

GOOD NEWS FOR PEOPLE ON THE GROW.

G.J. Grewe Brokerage & Development LLC 9109 Watson Rd., 4th Floor, St. Louis, MO 63126

www.gjgrewe.com