



[MT. VERNON CROSSING]

Mt. Vernon, Illinois
10,000 SF



Contact Information:
Gary Grewe
314.962.6300
gary@gjgrewe.com

MT. VERNON CROSSING

Mt. Vernon Crossing is a development located at the intersection of Broadway St. and Davidson Ave. It is a 10,000 SF retail building, anchored by a Wal-Mart Supercenter. Other retailers in the area include Lowe's, Staples, and Kohl's.

Mt. Vernon's excellent location with I-57 and I-64 major transportation routes have served commerce well. The city is home to many small and large businesses, as well as by many agricultural operations.

- Current tenants include:



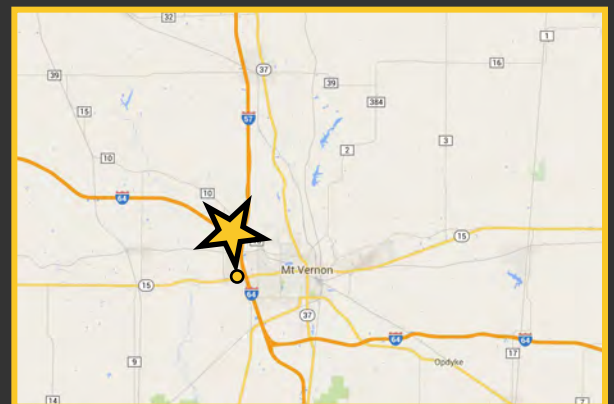
Intersection of Broadway St. & Davidson Ave. Mt. Vernon, IL

[DEMOGRAPHICS]

	1-Mile Radius	3-Mile Radius	5-Mile Radius
Med. Household Income	\$41,948	\$44,866	\$43,822
Total Population	18,530	30,101	79,044
Daytime Employment	17,800	19,557	35,076

[AVERAGE DAILY TRAFFIC]

Interstate 64	38,700 VPD
Broadway St.	18,900 VPD

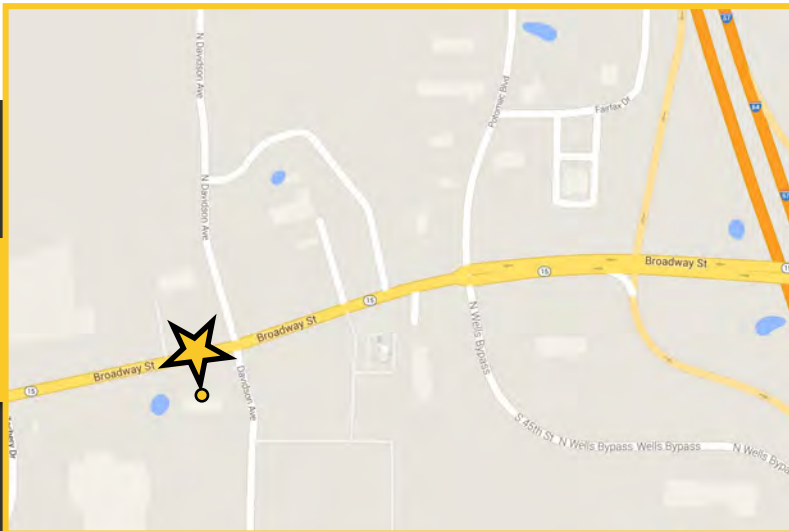
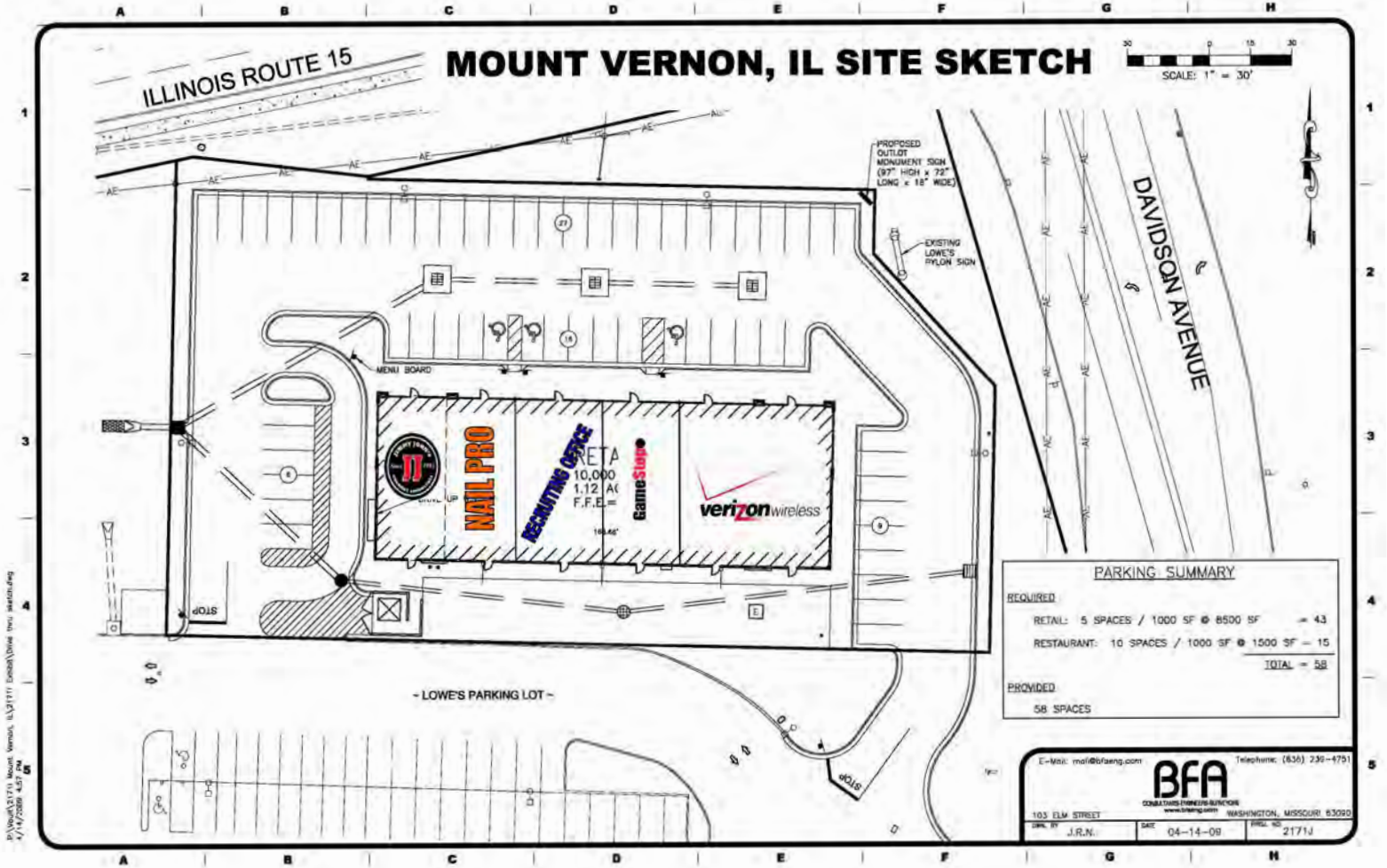


GOOD NEWS FOR PEOPLE ON THE GROW.

G.J. Grewe, Inc. 9109 Watson Rd., 4th Floor, St. Louis, MO 63126
www.gjgrewe.com

MT. VERNON CROSSING

Mt. Vernon, Illinois
10,000 SF



Contact Information:
Gary Grewe
314.962.6300
gary@gjgrewe.com